

Well Number	Depth to Water Below Land Surface in Feet				Total Change In Water Levels in Feet			
	2003	2008	2012	2013	2003 to 2013	2008 to 2013	2012 to 2013	2010 to 2013
11-17-105	186.62	189.10	N/A	198.84	N/A	-1.22	-10.74	N/A
11-17-101	180.48	178.00	N/A	N/A	N/A	2.48	0.00	0.00
11-17-401	124.03	124.38	125.04	125.17	-1.14	-0.81	-0.13	-0.13
11-17-101	194.88	N/A	194.60	195.50	-0.62	N/A	0.90	N/A
11-18-301	120.27	121.57	121.37	123.46	-1.39	-1.89	-2.09	-2.09
11-18-405	114.07	N/A	N/A	121.87	-7.80	N/A	N/A	N/A
11-18-301	115.26	115.56	117.00	117.02	-1.64	-0.14	0.00	0.00
11-18-702	154.45	152.02	155.20	158.38	-3.93	-6.36	-3.18	-3.18
11-18-835	157.76	157.63	158.67	159.30	-1.60	-1.67	-0.43	-0.43
11-18-212	105.70	111.73	105.81	106.10	-0.40	-5.63	-0.29	-0.29
11-19-330	82.22	82.22	81.93	82.16	0.06	-0.06	-0.23	-0.23
11-19-301	157.37	159.62	160.89	-3.52	-2.87	-1.43	-0.00	-0.00
11-19-818	103.78	106.82	106.92	109.09	-5.31	-2.27	-0.47	-0.47
11-20-301	95.12	95.85	95.80	97.10	-1.18	-3.25	-1.30	-1.30
11-20-401	101.18	116.70	100.48	100.53	-1.63	-10.23	-0.05	-0.05
11-20-501	101.18	116.70	100.48	100.53	-1.63	-10.23	-0.05	-0.05
11-20-608	114.02	117.24	109.84	112.26	-1.76	-4.98	-2.42	-2.42
11-20-806	167.38	167.49	147.54	169.14	-1.56	-1.65	-1.31	-1.31
11-20-907	162.19	179.86	160.10	163.08	-0.89	-16.78	-2.98	-2.98
11-21-102	104.17	107.37	104.40	104.42	-0.25	-3.45	-0.02	-0.02
11-21-301	201.46	200.51	202.00	202.00	-0.54	-1.49	-0.00	-0.00
11-22-405	115.88	117.52	119.13	119.38	-3.80	-1.86	-0.25	-0.25
11-22-106	170.57	N/A	172.15	172.38	-1.71	N/A	-0.23	-0.23
11-22-405	118.02	116.89	116.83	116.53	1.49	+2.46	+0.30	+0.30
11-23-101	168.35	168.35	168.35	168.35	0.00	0.00	0.00	0.00
11-23-508	118.29	124.73	120.14	124.22	-6.93	+5.01	-5.82	-5.82
11-26-601	119.77	120.33	120.00	121.20	-1.43	-0.87	-0.30	-0.30
11-26-701	112.74	114.49	115.23	N/A	N/A	N/A	N/A	N/A
11-26-805	169.97	172.57	N/A	N/A	N/A	N/A	N/A	N/A
11-26-908	144.12	145.40	150.20	151.22	-1.10	-2.73	-1.02	-1.02
11-27-310	138.80	147.77	141.60	141.80	-3.20	-5.77	-2.00	-2.00
11-27-802	139.94	134.26	134.50	134.46	-0.52	-0.20	+0.04	+0.04
11-28-302	89.39	84.88	84.52	84.14	+5.25	+0.47	+0.08	+0.08
11-28-501	108.08	111.99	-5.91	-5.95	N/A	N/A	N/A	N/A
11-33-103	232.25	237.48	248.10	251.56	-18.31	-1.77	-3.46	-3.46
11-33-201	203.20	205.12	202.32	208.16	-6.96	-3.84	-0.84	-0.84
11-33-502	275.60	284.85	297.80	298.38	-26.38	-17.13	-4.18	-4.18
11-33-602	197.72	N/A	202.08	202.08	-4.36	N/A	+0.83	+0.83
11-34-101	129.12	128.00	N/A	N/A	N/A	N/A	N/A	N/A
11-34-601	164.03	N/A	164.54	164.82	-0.78	N/A	-0.27	-0.27
11-34-701	292.15	N/A	N/A	N/A	N/A	N/A	N/A	N/A
11-34-801	186.63	N/A	190.97	197.13	-13.33	N/A	-6.14	-6.14
11-34-901	248.42	N/A	253.98	254.86	-6.44	N/A	-0.88	-0.88
11-35-101	196.07	N/A	196.74	196.74	-0.67	N/A	-0.00	-0.00
11-35-209	161.90	163.44	166.28	166.82	-5.02	-3.52	-0.64	-0.64
11-35-305	130.78	130.78	130.78	130.78	0.00	-6.83	-0.93	-0.93
11-35-406	150.42	149.94	N/A	154.42	-0.20	-5.15	N/A	N/A
11-35-501	191.28	N/A	191.04	191.12	+0.16	N/A	-0.08	-0.08
11-35-702	186.07	188.71	188.71	188.71	-0.04	-0.04	-0.00	-0.00
11-35-805	144.88	142.81	141.37	141.31	+3.37	+1.58	+0.06	+0.06
11-36-108	87.78	86.38	88.16	0.40	+0.18	-1.11	-0.55	-0.55
11-36-201	156.67	N/A	N/A	N/A	N/A	N/A	N/A	N/A
11-36-402	153.16	153.36	153.36	153.36	0.00	+0.19	+0.27	+0.27
11-36-405	154.40	155.08	157.39	157.40	-3.00	-2.37	-0.01	-0.01
11-36-708	191.03	N/A	193.73	195.66	-4.63	N/A	-1.93	-1.93
11-36-801	177.34	N/A	183.79	186.91	-9.57	N/A	-3.12	-3.12
11-36-902	127.61	133.98	N/A	132.36	-4.75	+1.48	N/A	N/A
11-37-101	193.06	191.61	186.90	185.66	-2.39	-6.16	-2.86	-2.86
11-37-112	118.24	N/A	119.42	120.37	-2.13	N/A	-0.95	-0.95
11-41-102	264.65	N/A	298.85	302.59	-37.94	N/A	-3.74	-3.74
11-41-404	241.92	N/A	266.29	269.98	-28.06	N/A	-3.69	-3.69
11-42-302	217.19	N/A	291.96	225.33	-8.14	N/A	-0.37	-0.37
11-42-505	271.22	N/A	283.08	285.70	-14.48	N/A	-2.64	-2.64
11-43-202	145.38	145.15	145.95	146.76	-1.38	-1.60	-0.81	-0.81
11-43-306	146.87	138.00	139.97	140.08	-3.61	-2.00	-0.11	-0.11
11-43-501	165.97	148.98	N/A	151.87	-4.70	-2.72	N/A	N/A
11-43-601	225.81	225.81	225.81	225.81	0.00	-2.89	-2.86	-2.86
11-44-602	233.58	N/A	235.40	236.69	-3.11	N/A	-1.29	-1.29
11-45-407	228.60	233.88	232.12	234.05	-5.45	-0.17	-1.93	-1.93

Production reports due June 1 to district

NOTE: N/A Denotes data not available

Continued From Page One

Owners and operators of confined animal feeding operations (CAFOs) can report the groundwater data on a special form available through the district office and on the web site.

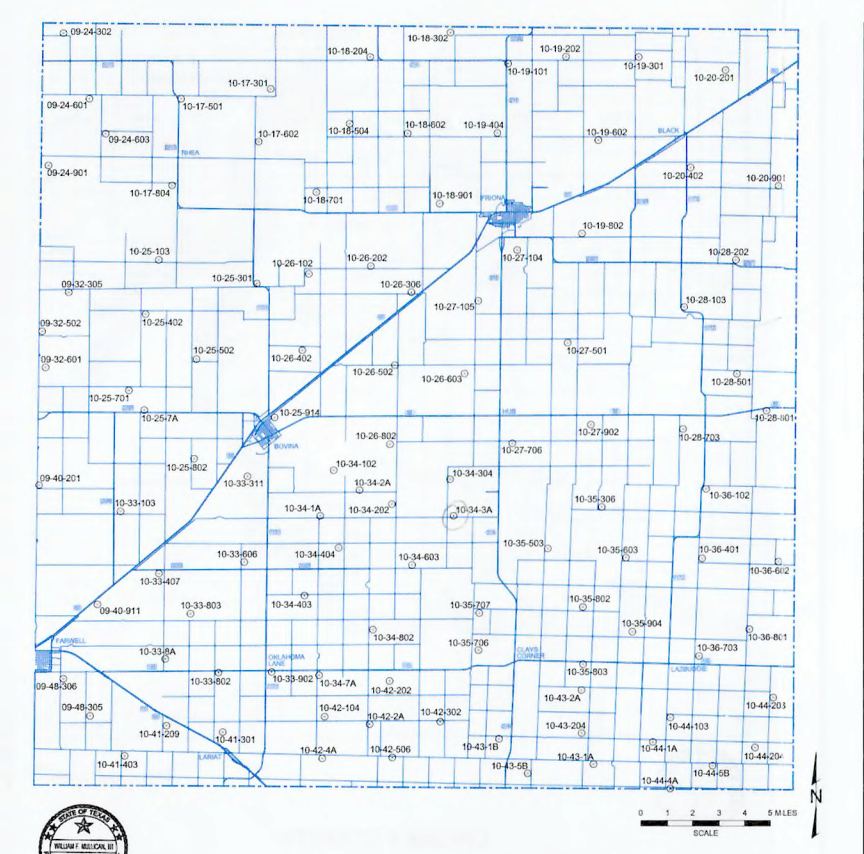
The paper forms will be accepted by mail, fax (806-762-1834), or e-mail (hwpd@hwpd.com).

"Persons also have the option of submitting production reports on-line at www.hwpd.com/ops-meter-forms." This special web site features a quick reference tool that gives step-by-step instructions on how to enter the required data and submit it to the Water District," Crenwedge said.

Persons who have questions or need assistance with data entry.

"They can call (806) 762-0181 to speak with district staff or they can visit the HPWD office at 2930 Avenue Q in Lubbock. We encourage folks to submit this information as soon as possible. By doing so, district staff can help with any data entry concerns prior to the June 1 reporting deadline," Crenwedge said.

A moratorium on enforcement and civil penalties for failure to submit production reports is in effect for calendar years 2013 and 2014. This was approved by the HPWD Board of Directors to give persons time to become acquainted with the groundwater reporting process.



Well Number	Depth to Water Below Land Surface in Feet				Total Change In Water Levels in Feet			
	2003	2008	2012	2013	2003 to 2013	2008 to 2013	2012 to 2013	2010 to 2013
09-24-302	290.85	289.91	291.16	292.65	-1.80	-2.74	-1.49	-1.49
09-24-601	330.65	329.74	326.54	327.22	+3.47	+2.52	+0.68	+0.68
09-24-703	315.61	314.32	314.58	315.44	-0.13	-1.12	-0.86	-0.86
09-24-801	N/A	299.20	301.59	305.00	N/A	-5.80	-3.41	-3.41
09-32-305	N/A	N/A	N/A	300.90	N/A	N/A	0.84	0.84
09-32-402	381.22	394.76	407.02	412.28	-31.06	-17.52	-5.26	-5.26
09-32-601	348.55	356.76	366.11	369.76	-21.21	-13.00	-3.65	-3.65
09-40-201	343.81	350.44	356.33	357.63	-13.82	-7.19	-1.30	-1.30
09-40-811	385.15	393.10	398.40	403.07	-14.92	-6.97	-1.49	-1.49
09-48-305	315.38	327.92	335.08	354.49	-39.11	-26.57	-1.41	-1.41
09-48-306	N/A	N/A	360.20	368.88	N/A	+1.32	N/A	N/A
09-48-401	199.10	201.17	205.66	205.96	-6.86	-4.79	-0.30	-0.30
09-48-501	260.30	260.84	263.03	262.22	-1.92	-2.38	-0.81	-0.81
09-48-601	191.30	190.97	191.11	194.89	-5.59	-3.92	-0.78	-0.78
10-17-804	N/A	N/A	214.77	221.66	N/A	-9.05	-2.16	-2.16
10-18-204	237.48	234.78	234.34	234.36	+3.15	+1.83	+0.08	+0.08
10-18-302	255.30	248.79	248.92	249.12	+6.18	+0.33	-0.60	-0.60
10-18-504	270.18	272.20	276.72	276.77	-1.33	+0.52	-0.05	-0.05
10-18-602	298.98	294.14	292.82	292.65	+4.33	+1.49	+0.17	+0.17
10-18-702	237.48	234.78	234.34	234.36	+3.15	+1.83	+0.08	+0.08
10-18-801	N/A	N/A	287.18	295.07	N/A	-3.12	-1.42	-1.02
10-19-101	295.83	295.76	N/A	296.33	-2.50	-2.57	N/A	N/A
10-19-202	326.74	324.07	331.34	332.60	-6.86	-8.53	-1.26	-1.26
10-19-301	291.46	290.51	292.00	292.00	-0.54	-0.56	-0.37	-0.37
10-19-404	255.91	258.17	261.00	262.22	-5.01	-0.55	-0.20	-0.20
10-19-502	300.14	301.30	301.39	313.42	-12.08	-11.60	-3.03	-3.03
10-19-602	252.74	253.91	257.78	259.12	-4.85	-6.89	-0.19	-0.19
10-20-201	193.25	193.25	193.25	193.25	0.00	-1.97	-1.01	-1.01
10-20-301	210.89	206.68	215.56	217.43	-0.74	-0.85	-0.13	-0.13
10-20-401	276.80	267.01	265.88	267.02	+3.61	-0.01	-0.44	-0.44
10-25-103	248.68	246.83	245.22	245.10	+1.58	+1.73	+0.12	+0.12
10-25-104	261.96	260.96	260.96	260.96	+1.15	+1.02	+0.02	+0.02
10-25-202	193.85	N/A	201.08	202.91	-4.06	N/A	-1.83	-1.83
10-25-301	332.78	343.09	363.85	365.43	-32.65	-22.34	-1.58	-1.58
10-25-401	187.20	187.20	187.20	187.20	0.00	-0.54	-0.54	-0.54
10-25-502	184.03	N/A	184.03	184.03	N/A	N/A	-0.66	-0.66
10-25-601	246.39	251.13	257.22	259.99	-13.60	-8.86	-2.77	-2.77
10-26-102	266.75	266.07	268.00	269.31	-2.56	-3.24	-1.31	-1.31
10-26-201	351.42	351.42	351.42	351.42	0.00	-0.12	-0.24	-0.24
10-26-306	N/A	N/A	409.31	410.89	N/A	-1.58	N/A	-1.58
10-26-402	329.45	335.55	335.55	340.16	-10.71	-6.61	-2.61	-2.61
10-26-502	389.98	396.04	402.14	404.60	-14.72	-9.56	-2.46	-2.46
10-26-601	387.80	396.96	401.59	410.60	-12.80	-8.63	-1.01	-1.01
10-26-704	324.73	333.88	340.36	342.90	-33.08	-20.55	-4.33	-4.33
10-26-801	400.04	410.18	415.28	416.95	-10.91	-6.17	-1.67	-1.67
10-26-901	439.76	444.72	450.86	452.93	-16.79	-11.83	-2.56	-2.56
10-27-706	N/A	357.03	N/A	403.35	N/A	-46.32	N/A	N/A
10-27-902	351.47	363.79	385.08	390.36	-38.89	-26.57	-2.84	-2.84
10-28-103	385.42	385.42	385.42	385.42	-15.94	-4.84	-2.64	-2.64
10-28-201	385.42	385.42	385.42	385.42	-0.00	-0.00	-0.00	-0.00
10-28-301	385.42	385.42	385.42	385.42	-0.00	-0.00	-0.00	-0.00
10								